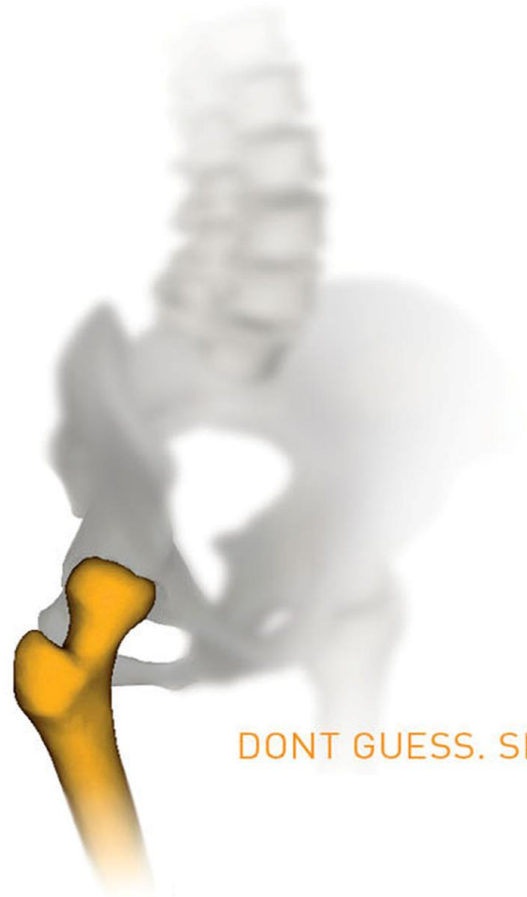


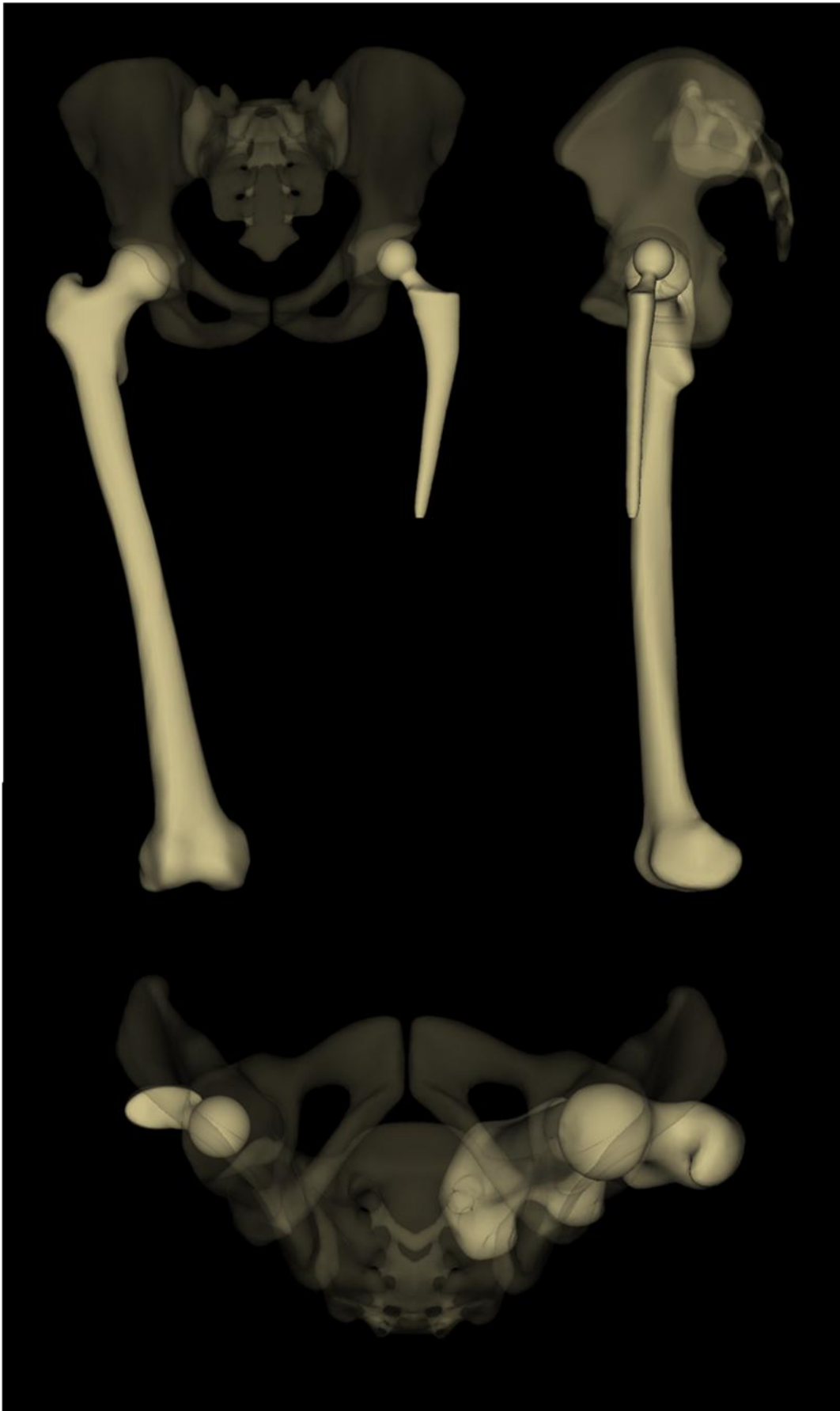
Patient report example : Hip

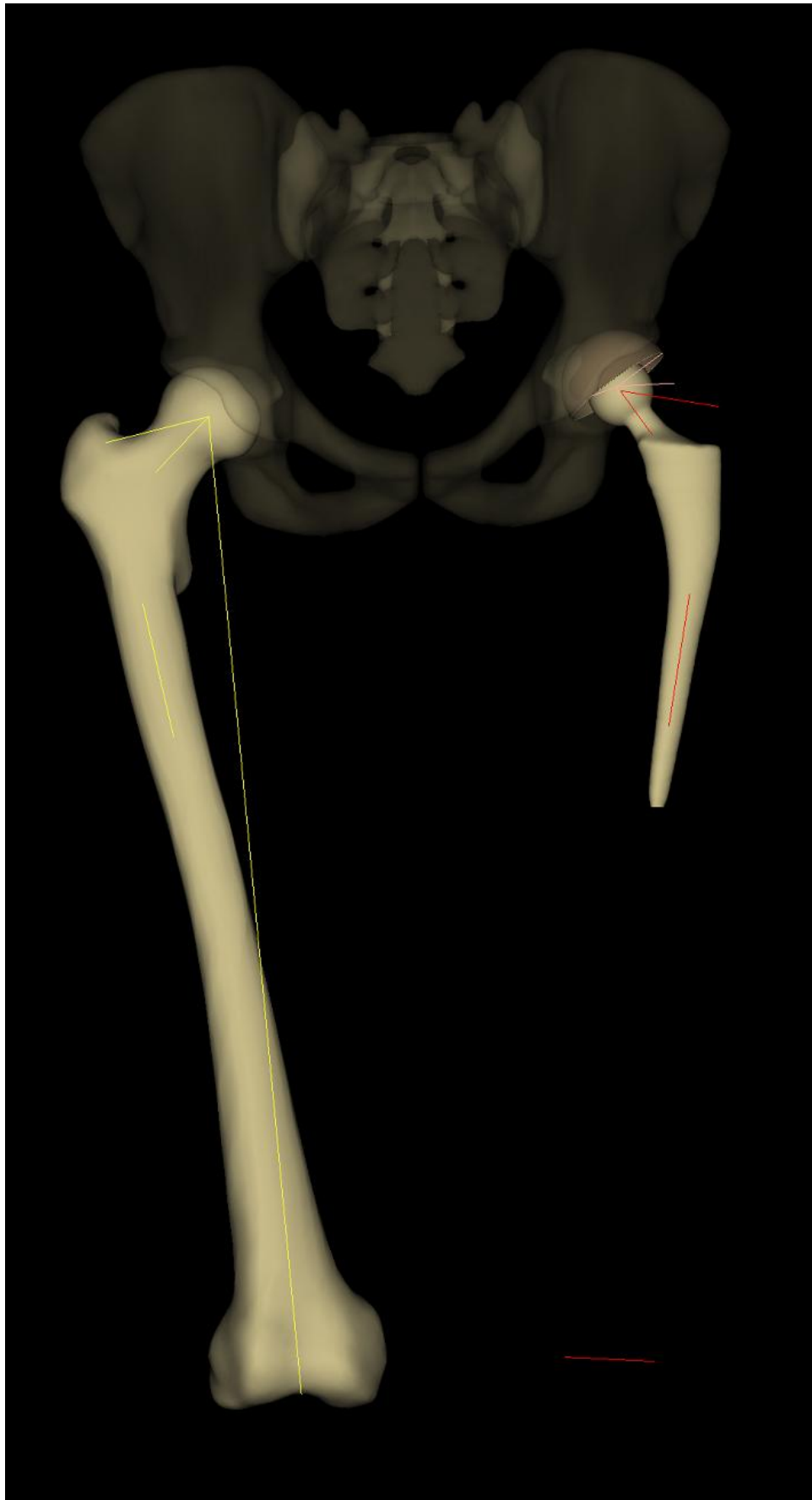
- 69-year-old female.
- Uncomplicated primary THA.
- Restored offset.
- Cup anteversion is 28° relative to the anterior pelvic plane, but only 11° when standing (functional anteversion) because of the anterior tilt of the pelvis (Page 6).

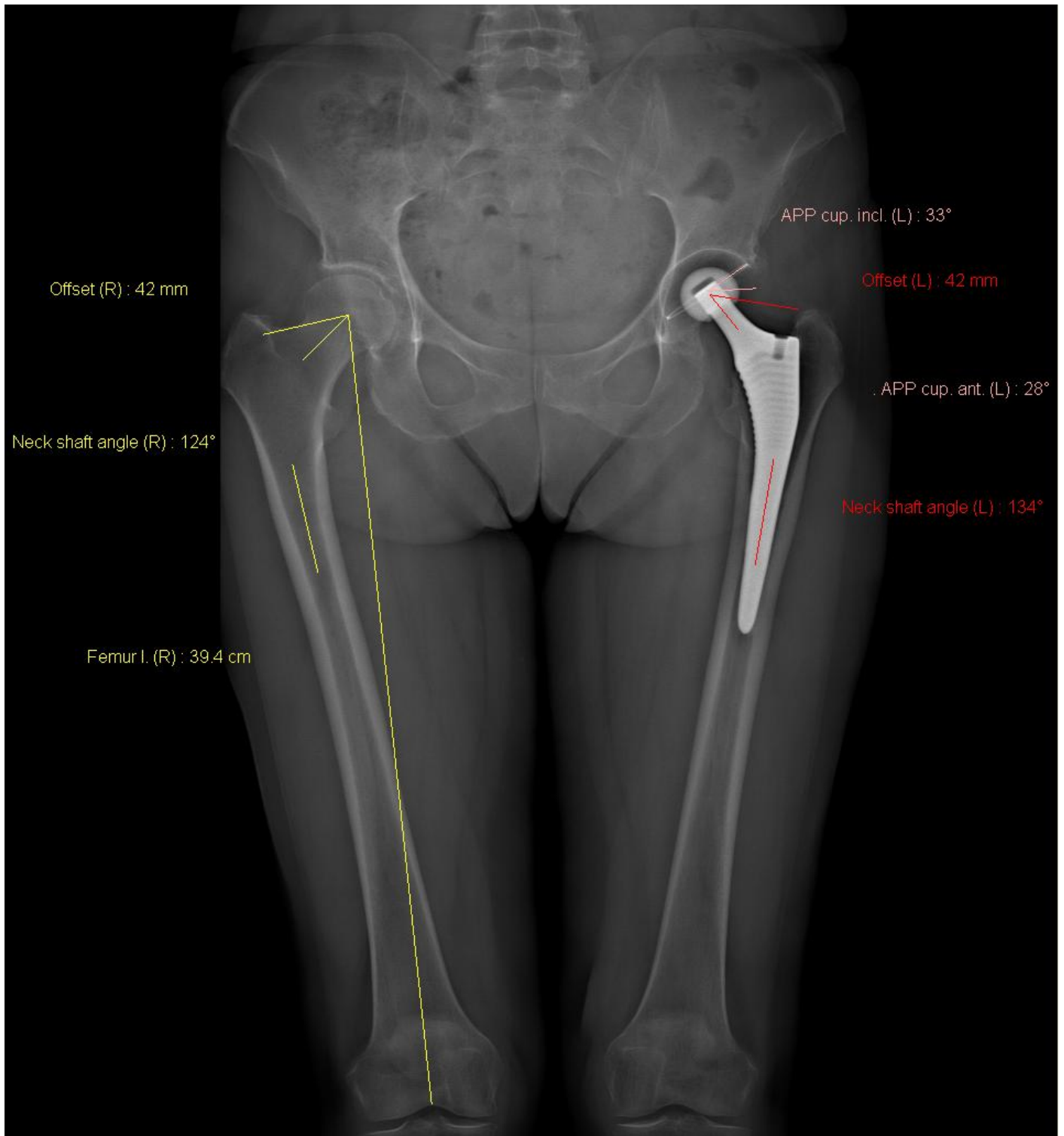


DONT GUESS. SEE.

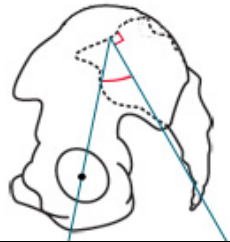
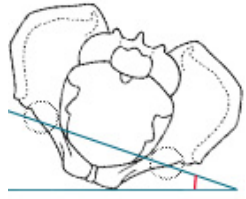
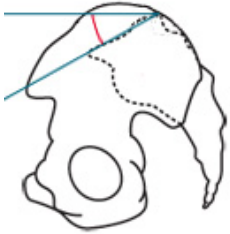
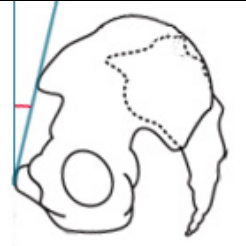
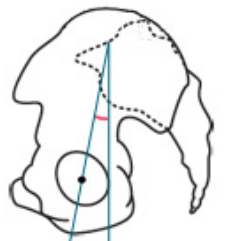









Pelvic parameters

| Pelvic parameters | Value | | Pelvic parameters | Value | |
|--------------------------|-------|--|-----------------------------------|-------|---|
| Pelvic incidence (1) | 45° |  | Pelvis axial rotation (2) | 2° |  |
| Sacral slope (1) | 44° |  | Anterior pelvic plane inclination | 8° |  |
| Sagittal pelvic tilt (1) | 1° |  | | | |

(1) Parameters calculated in the patient frame (based on a vertical plane passing through the center of the cotyles), which corrects the effect of a potential axial rotation of the pelvis during acquisition.

(2) A pelvis axial rotation is positive when the pelvis is rotated towards the patient left side.


Cup positioning

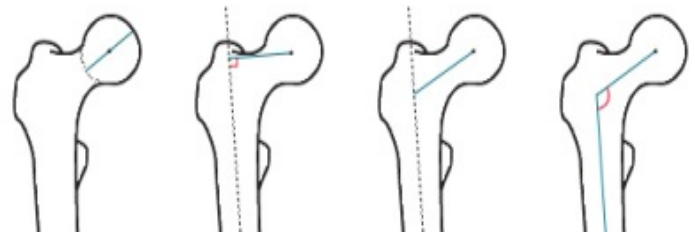
| Acetabular cup | Left (1) | Left (APP) | |
|----------------------------|-----------------|-------------------|--|
| Acetabular cup inclination | 32° | 33° |  |
| Acetabular cup anteversion | 11° | 28° | |

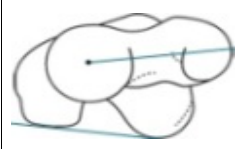
APP: Parameters calculated relative to Anterior Pelvic Plane (Lewinnek et al., 1978)

(1) Parameters calculated in the patient frame (based on a vertical plane passing through the center of the cotyles), which corrects the effect of a potential axial rotation of the pelvis during acquisition.

Lower limb parameters

| Lengths (3) | Right | Left (THA) | |
|--------------------|--------------|-------------------|---|
| Femur length | 39.4 cm | 40.1 cm |  |

| Hip (3) | Right | Left (THA) | |
|-----------------------|--------------|-------------------|---|
| Femoral head diameter | 42 mm | |  |
| Femoral offset | 42 mm | 42 mm | |
| Neck length | 52 mm | | |
| Neck shaft angle | 124° | 134° | |

| Torsions | Right | Left (THA) | |
|-----------------|--------------|-------------------|--|
| Femoral torsion | 17° | 8° |  |

(3) Parameters calculated in 3D.

(4) Parameters calculated relative to posterior bi-condylar plane.

Last page of report