

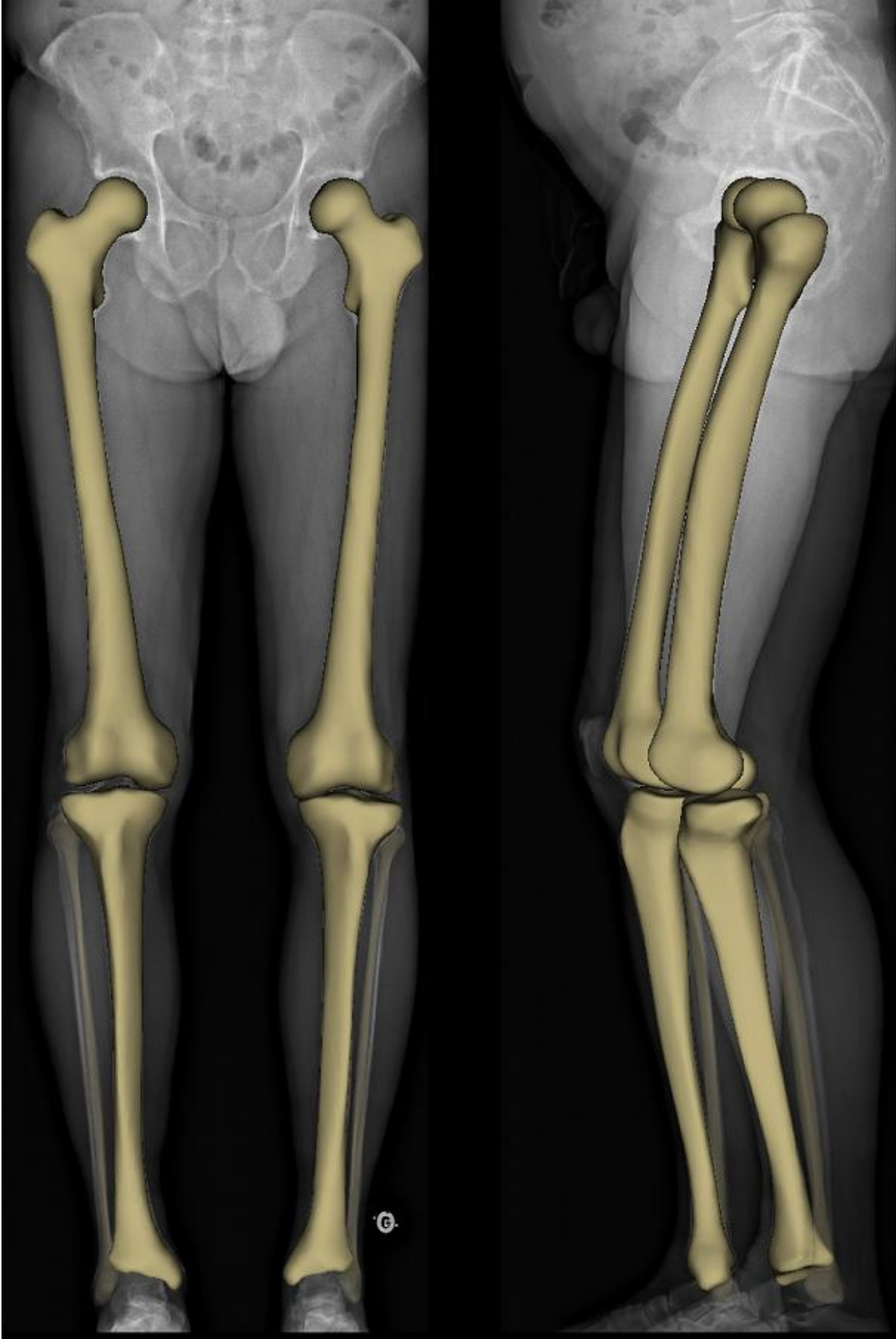
## Patient report example : **Knee**

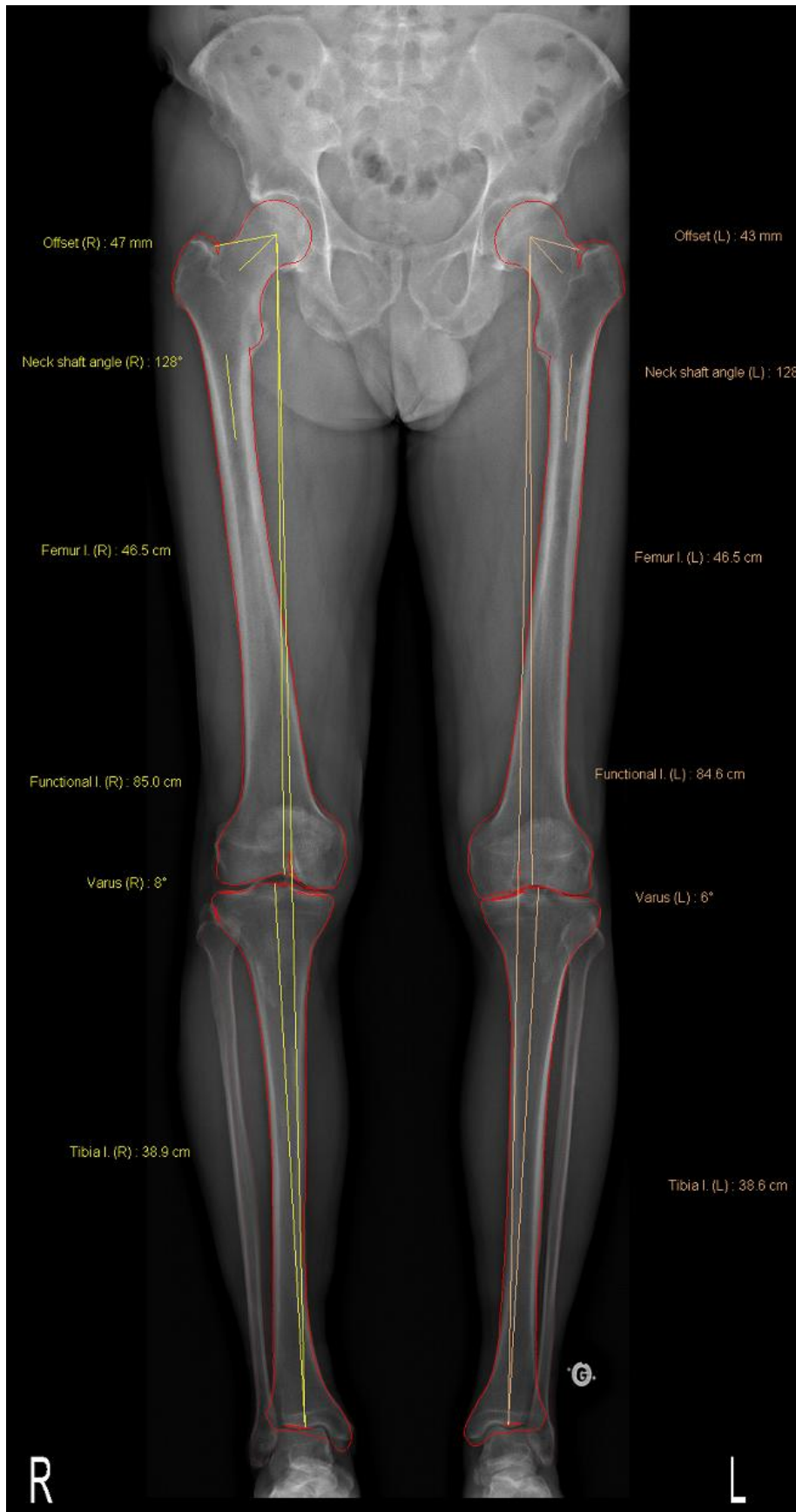
- 68-year-old male.
- Preoperative examination before total knee arthroplasty
- On 2D AP Xray, both knee seem to be well aligned (Page 1)
- This is due to the association of knee flexion and internal rotation (Page 5)
- 3D shows that in reality, both knees have significant varus deformities (Page 7)

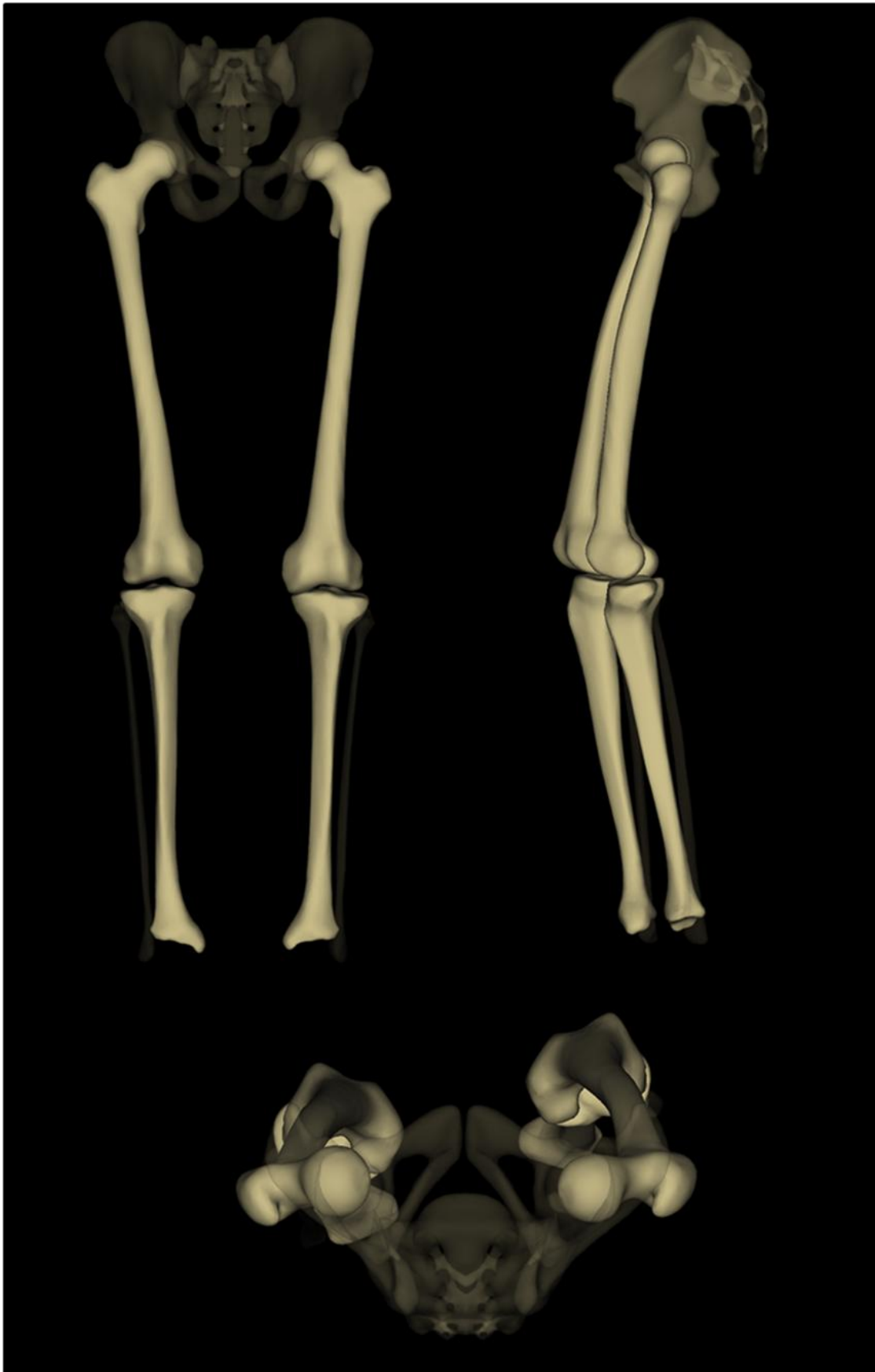


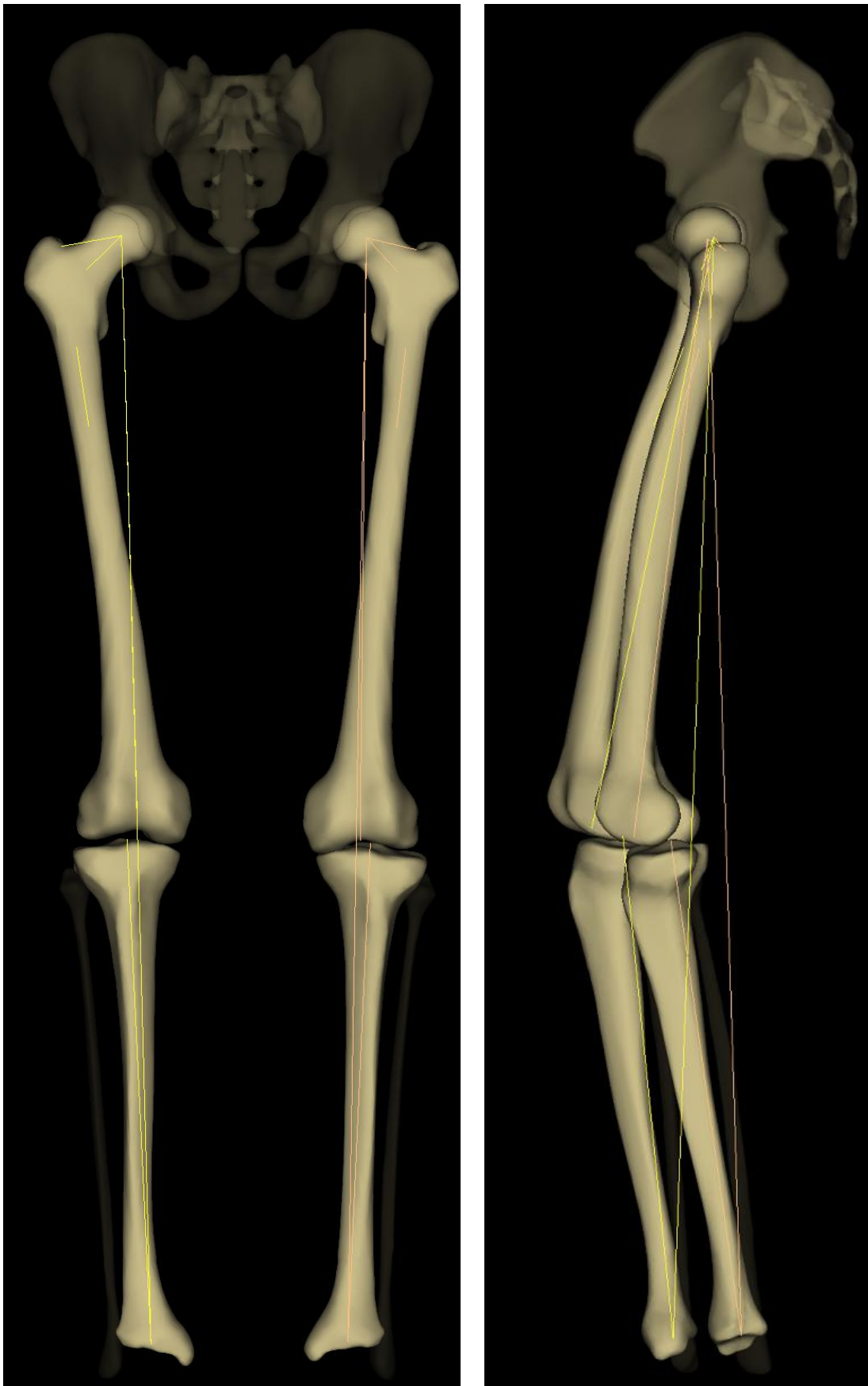
DONT GUESS. SEE.

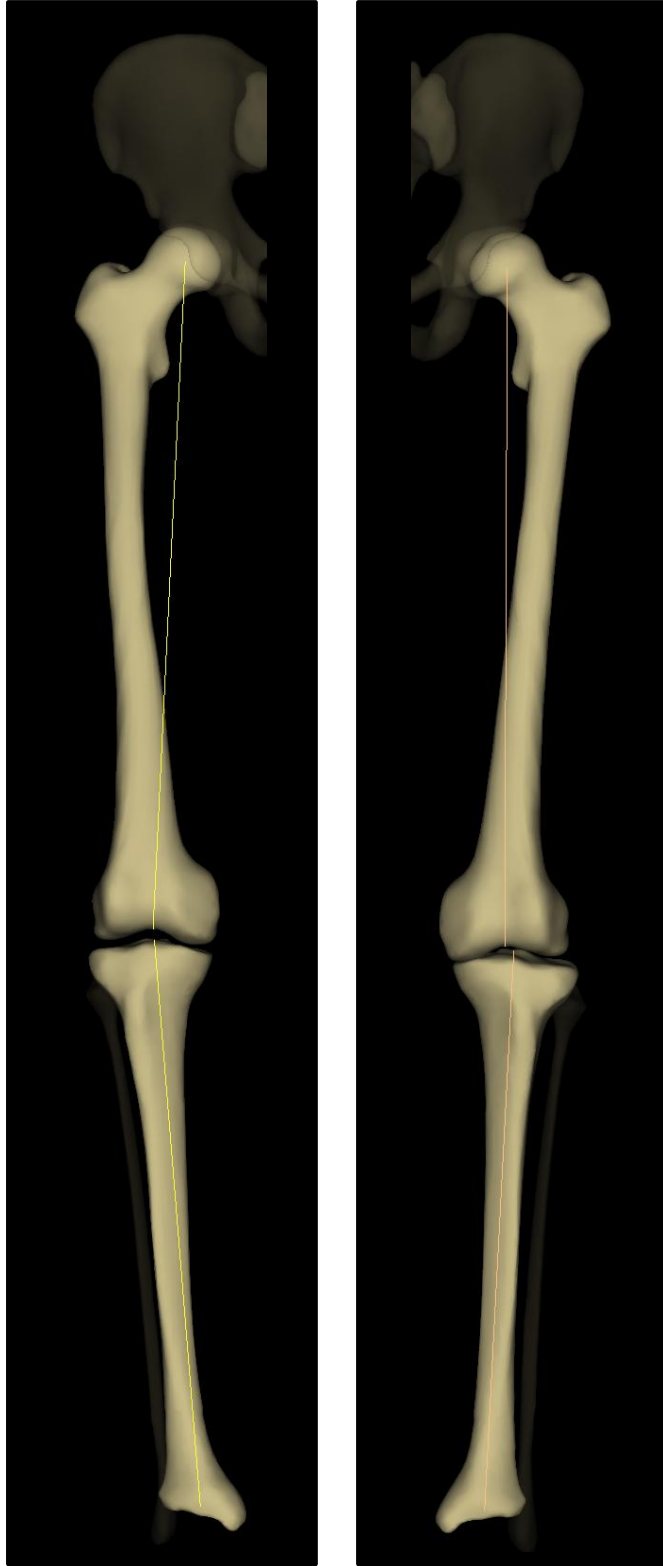




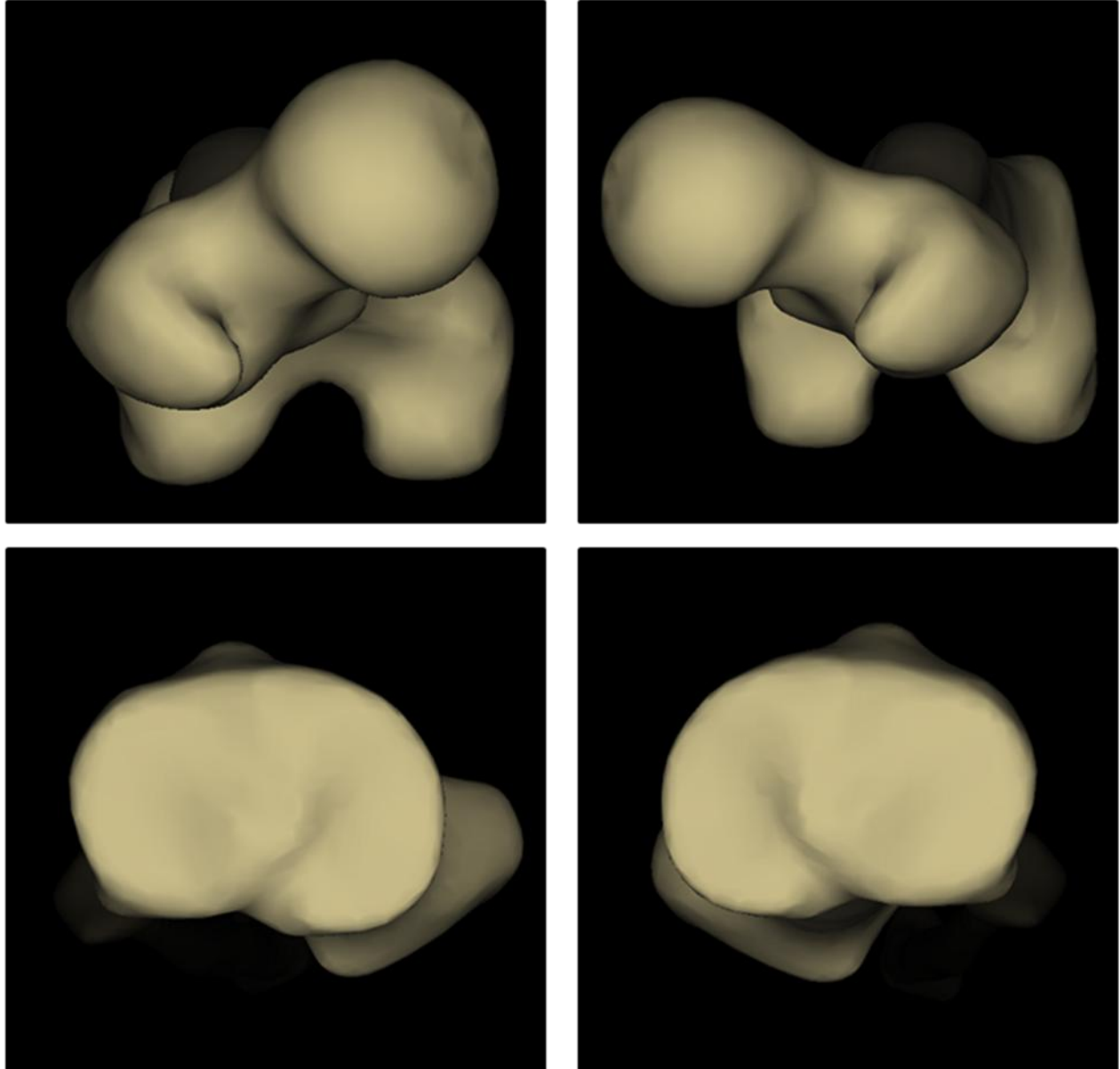








*Right and left knees « real » AP views*



*Axial views of femurs and tibias => Torsions assessment*



**Knee parameters**

<b>Lengths (3)</b>	<b>Right</b>	<b>Left</b>	
Femur length	46.5 cm	46.5 cm	
Tibia length	38.9 cm	38.6 cm	
Functional length	85.0 cm	84.6 cm	
Anatomical length	85.4 cm	85.1 cm	

<b>Femur (3)</b>	<b>Right</b>	<b>Left</b>	
Femoral head diameter	50 mm	52 mm	
Femoral offset	47 mm	43 mm	
Neck length	59 mm	54 mm	
Neck shaft angle	128°	128°	

<b>Knee (4)</b>	<b>Right</b>	<b>Left</b>	
Valgus/Varus	Varus 8°	Varus 6°	
Flessum/Recurvatum	Flessum 16°	Flessum 14°	
Femoral mechanical angle	91°	92°	
Tibial mechanical angle	82°	87°	
HKS	6°	4°	

<b>Torsions</b>	<b>Right</b>	<b>Left</b>	
Femoral torsion	10°	25°	
Tibial torsion	28°	34°	
Femorotibial rotation	5°	2°	

(3) Parameters calculated in 3D.

(4) Parameters calculated relative to posterior bi-condylar plane.